

feature

THE Art of SPACE DESIGN

BY MELODY WREN // PHOTOGRAPHY BY SANDY MASZAK



Janette Hayhoe's home is like a painting - bursting with character and personality in a multitude of colours, patterns and textures. Though small, there's something new and beautiful everywhere you look.

feature

A small, intimate living room begs you to put your feet up and read a book by the fire. **OPPOSITE TOP:** Janette's artistic talents breathe life into each room of the house. **OPPOSITE BOTTOM:** The kitchen functions as both a cooking and dining area with every inch of space considered in the design. Stackable laundry machines are hidden behind a curtain next to the fridge.



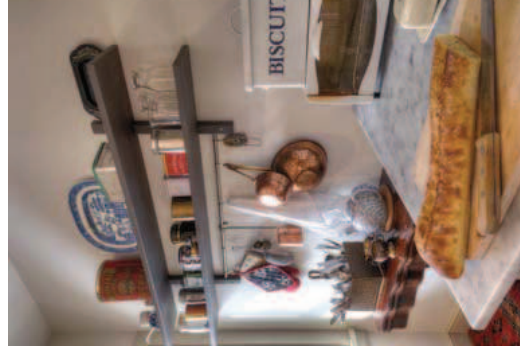
Walking into Janette Hayhoe's home is like stepping into a European country cottage. It comes as no surprise that she also owns a house in the Loire Valley of France, as the sophisticated style resonates throughout her Guelph residence. There's a sense of restful luxury and an irresistible feeling of comfort that encourages you to curl up in front of the fire, or perch at the kitchen island and chat over a glass of wine.

Janette, an accomplished artist and former interior designer, looked at several houses in Guelph before purchasing the derelict semi built in the 1840s. The scope of the project involved gutting the house to the outer walls and its challenge was to efficiently redesign use of its 950-sq.-ft., but she had a vision. *Continued on page 22*





LEFT: An eye-catching vignette in the kitchen is coloured by a few of Janette's still life paintings and bright spring flowers. **BELOW:** Honed Carrera marble tops what minimal counter space there is while wall shelving offers extra storage space. **OPPOSITE:** The kitchen island was crafted from old beams and planks discovered during the renovations. The open design beneath the countertop makes the kitchen feel more spacious.



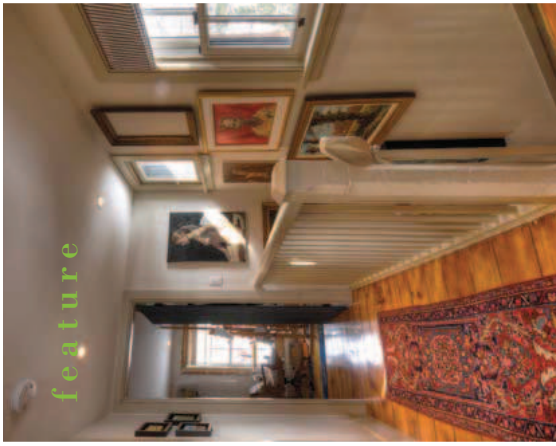
"I'm not sure I intended it to be such a big project, but it was an exciting challenge to take on," Janette says. "When you renovate a house to your own design, it gives you a real sense of ownership."

Janette turned to Dave Smedley of **Colvin Contracting & Design** for the renovations, which took about six months after she redesigned the space. Coincidentally, Smedley lives across the street and was recommended by a friend. When he and his team stripped the house they discovered that behind the plaster and lathe, the original building was a barn of post and beam construction. A single storey extension at the back of the house held a tiny kitchen, bathroom and stairs to the basement. They added a second floor extension and removed the stairs and bathroom to create more space. Access to the basement is now from the outside. The second floor was incorporated into the design to include a full bathroom,

a large master bedroom and a spare room that doubles as an art studio. The original building was barn board, later bricked and eventually split into two semis. All the window openings are slightly different sizes, lending character to the finished house. The living room has the original flooring and stairs, but Janette had a wall removed at the base of the stairs to open up the main floor. The house had knob and tube wiring, so the electric and plumbing needed to be completely replaced also.

Janette says she likes the challenge of working with small spaces. "You have to be smart about the design. Space planning is one of my favourite areas... just give me a set of plans," she says. Given its scale, the house could easily feel cluttered and closed in, but instead feels open and fresh. In every room there is an eclectic mix of styles, furniture and fabrics balanced by Janette's artwork sprinkled throughout. *Continued on page 24*





feature

The living room is made cozy by a beautiful fireplace that looks original but is actually a gas unit from **Fergus Fireplace**, crowned by a mantel custom built by Ross Phillips.

The kitchen, which opens to a side porch and yard, is completely new, but was designed to suit the age and character of the home. Planks that previously lined the old kitchen walls were combined with smaller beams to craft the kitchen island (Colvin). The wooden stools, like most of Janette's furniture, are secondhand. Hanging above the island are unusual reproduction light fixtures from Rejuvenation Hardware. Some of the cabinets are from Ikea but Smedley customized them with mouldings and Old White paint by Farrow & Ball for a more unique look. Honed Carrera marble countertops from **Graniteworx Inc.**, along with a stone floor, balance the woods in the space beautifully. *Continued on page 26*



2011



MURRAY PEISS
2013 OR 10311009-40621952

Guelph's largest lighting showroom with over 6,000 square feet of lighting, furniture and home décor. Working with the top lighting manufacturers in North America enables us to offer you a wide range of products to suit your décor and illumination needs. Our expert lighting specialists will help you find the right lighting solutions for your home. While you're in, don't forget to check out our home décor and unique furniture pieces.

ALWAYS UNIQUE
ALWAYS IN STYLE

LITES

THE ILLUMINATING EXPERTS

987 Gordon Street (at Kortright Rd.) Guelph
519 837 8440 www.lites.ca

Hours:

Monday - Friday 9:30 am - 5:30 pm
Saturday 10:00 am - 5:00 pm
Sunday 12:00 pm - 4:00 pm

ILLUMINATING GUELPH SINCE 1997



For everything from renovating, expanding or creating living space, to replacing windows and doors...



COMPLETE HOME RENOVATIONS :: DECKS & OUTDOOR BUILDINGS :: CUSTOM CARPENTRY :: ADDITIONS



ERIC SMALL
Carpentry & Renovations Ltd.

Quality Above All

519.221.1778

ericsmallcarpentry@gmail.com

www.ericsmallcarpentry.wordpress.com

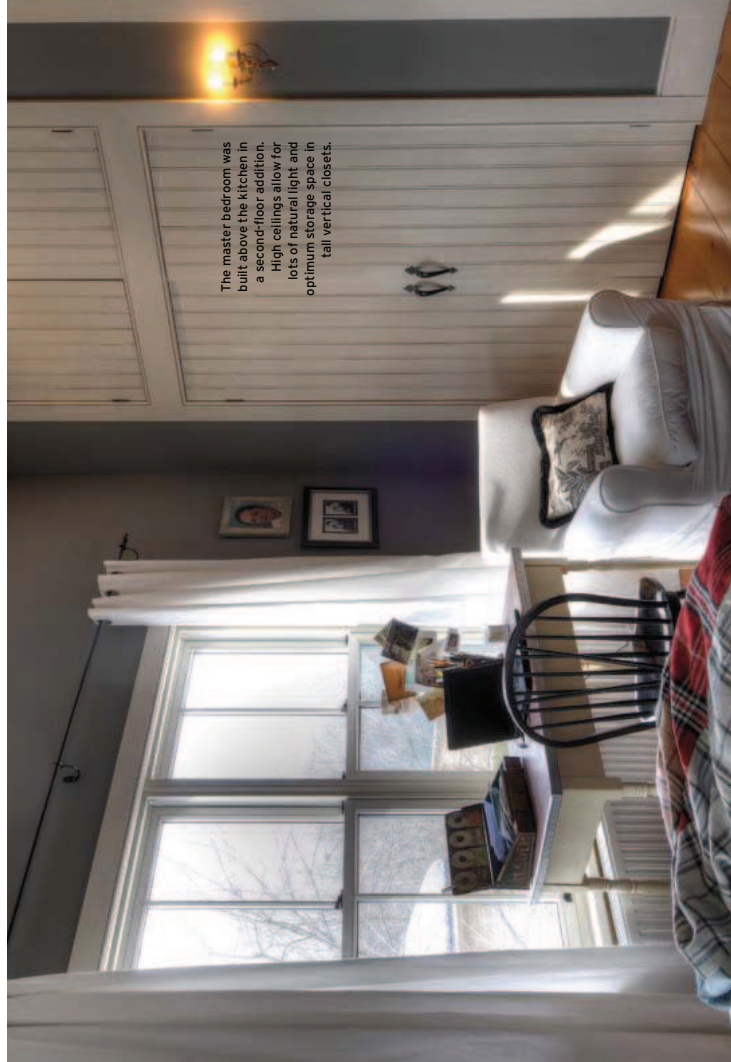
TOP: Original pine subflooring was refinished in the upstairs hallway and art room. **ABOVE:** Janette painting in her upstairs studio, which doubles as a spare bedroom. **RIGHT:** The home's only bathroom is a tranquil spot to unwind, inspired by 1940s style.

feature

The home's only bathroom is on the second floor and is a calm, relaxing space inspired by 1940's style. Custom beadboard doors (Colvin) bring the country-cottage style upstairs where original, pine subflooring was refinished in the original space and salvaged pine was used in the addition – now Janette's lovely bedroom – to match.

Janette's still life paintings are visible throughout the house and offer pleasant surprises each time you turn a corner. Real-life objects and people, including her two grown daughters, inspire much of her painting (www.janettechayhove.com). The open concept allows natural light to infiltrate the entire home, making it easy for her to move her easel to various rooms, often setting up in the living room or kitchen. "Wherever there is wall space, I hang my paintings. They are like members of the family," she says, though actual members extend to include her two small dogs and cat that help to fill the space with life and excitement.

This delightful little home was certainly no small task. Daunted by the enormity of the restoration project, Janette's real estate agent cautiously advised her that she could probably get her out of the deal, but Janette has no regrets. "I've done enough renovating that I know projects grow and it was worth it." **OH**



The master bedroom was built above the kitchen in a second-floor addition. High ceilings allow for lots of natural light and optimum storage space in tall vertical closets.

Exceptional Homes Require Exceptional Marketing.

Whether buying or selling
Your Hometown Realtors
offer the service and attention
your property deserves.



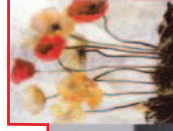
Your Hometown Realtors

Glen Kelley, broker
gkelley@hometownrealtors.ca

Matthew Bennett-Monry, sales representative
mbmonry@hometownrealtors.ca

www.hometownrealtors.ca
519 846 0959 888 268 2283

ROYAL LEPAGE
RCR Realty, Brokerage
Fully Licensed, Owned & Operated



Rumours furniture



Handcrafted Leather Furniture Since 1990

Discover craftsmanship...

A beautifully tailored, Canadian-made collection passionately crafted by owners Doris & Lou Bozzelli in the in-store workshop below the showroom floor.

Leather sofas, loveseats and armchairs... in stock and available for same day delivery.

Visit our showroom and workshop:
Main Street, Downtown Rockwood, ON



rumoursfurniture.com • 519.856.2575